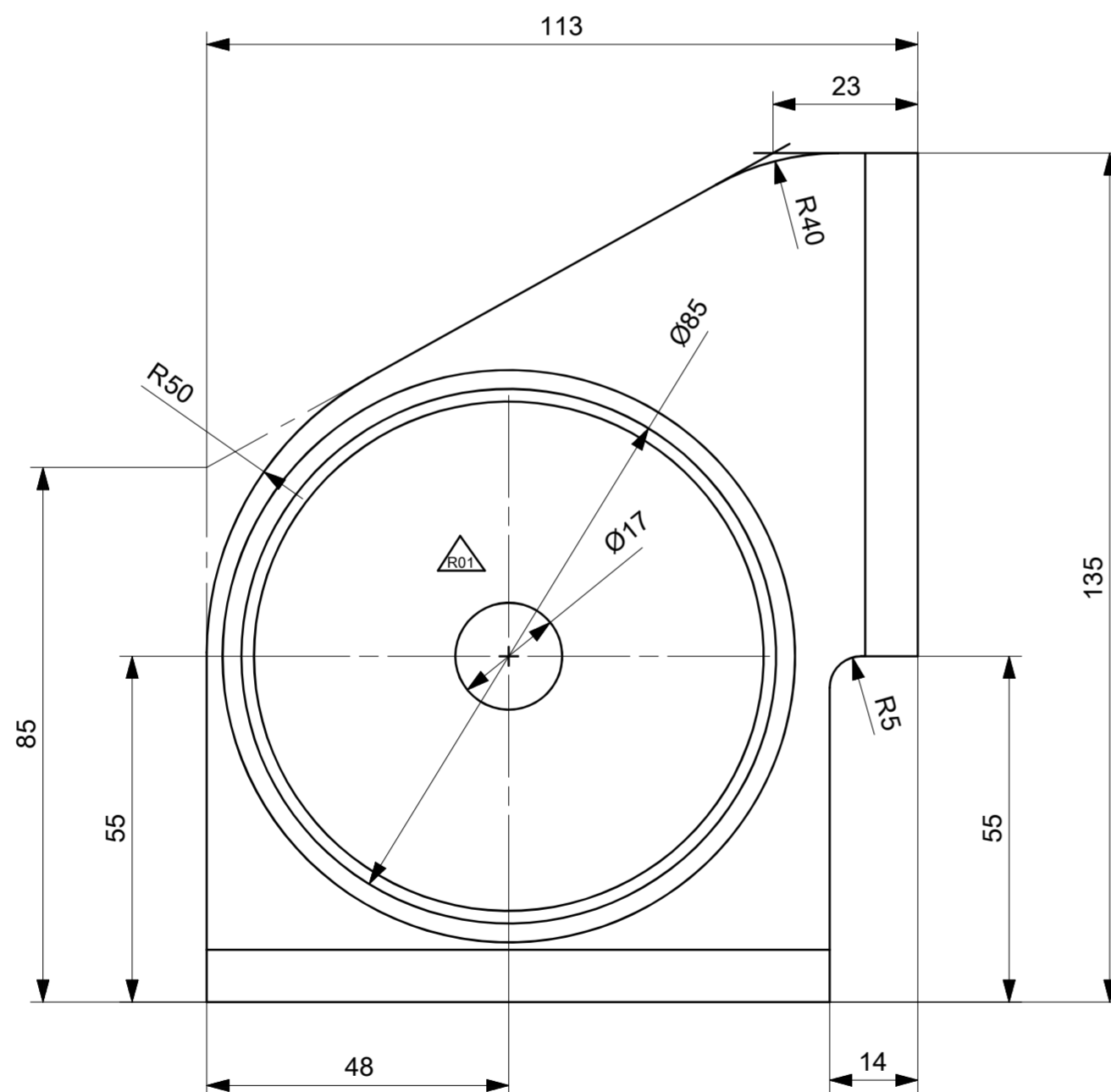
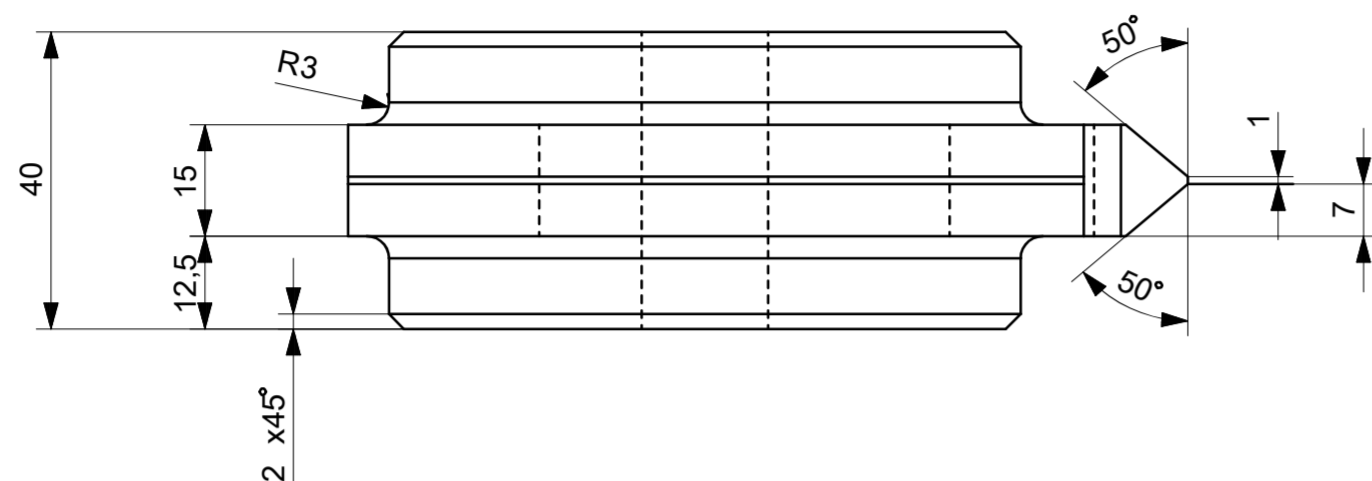


ISO 13920 Welded Construction	ISO 2708 General Tolerances		S 12708 Steel Casting
	mm	in	
<1000	6.0	0.8	
<630	4.0	0.7	
<400	3.0	0.6	
<250	3.0	0.4	
100	2.0	0.3	
40	1.5	0.2	
L mm	Ham	Is	
Norm. Size	Class		
<4000	2.0	0.4	
<2000	1.2	0.4	
<1000	0.8	0.3	
<400	0.5	0.3	
30-120	0.3	0.2	
2-30	0.2	0.1	
L mm	m ±	K ±	
Norm. Size	Class		
>20000	9.0	8.0	
<20000	8.0	7.0	
<16000	7.0	6.0	
<12000	6.0	5.0	
<8000	5.0	4.0	
<4000	4.0	3.0	
<2000	3.0	2.0	
<1000	2.0	1.5	
<400	1.0	1.0	
30-120	1.0	0.5	
2-30	1.0	0.5	
L mm	A ±	E ±	
Norm. Size	Class		



STEEL SHEETS NOTES:

Thermal cutting - Classification of thermal cuts -  
Geometrical product specification and quality tolerances  
According to EN ISO 9013 - 231

Hot-rolled steel plates 3 mm thick or above -  
Tolerances on dimensions and shape  
According to EN10029 - B

Ra 12.5

Technical Specifications					
Technical Document					
Fixture/Mould Asset ID.					
Coating/Heat Tre./Roughness	R01	Drawing Updated		01/07/2024	T.ŞABA
Paint/Color	Modf. No	Modification Description		Date	Sign